



English Manual
2016.11.1

Ocean Guam

Contents 1

Basic operation

Preparations in advance to use T-Card 2

How to read T-Card 3

Directly enter membership number 4

Adding T-point ① 5

Adding T-point ② 6

Adding and using T-point ① 7

Adding and using T-point ② 8

Adding and using T-point ③ 9

Optional operation

Cancelling T-Point ① 10

Cancelling T-Point ② 11

Daily trial balance sheet 12



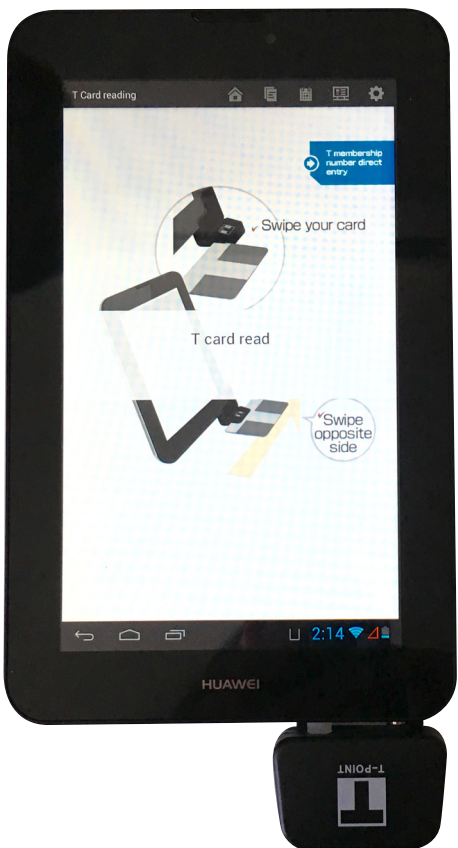
Plug T-Card reader

Connect attachment to ear phone plug, then fix card reader onto the attachment.



Start up [T-UNIT] app

Touch [T-UNIT] icon  on home screen.



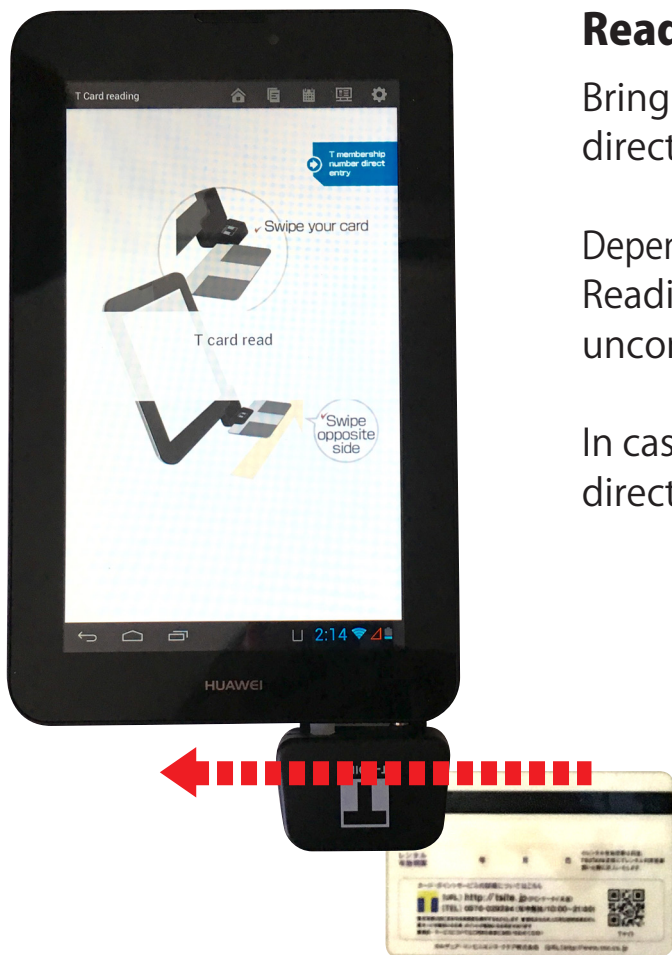
Start application to show T-Card reader screen.

Read T-Card

Bring [◀] to front facing the user and insert card in direction of [◀].




Depending on type of card, the face for reading will differ. Reading the wrong side, swiping too fast or unconnected Wifi, will result in reading error.

In case of reading error, enter membership number directly. (See P4)

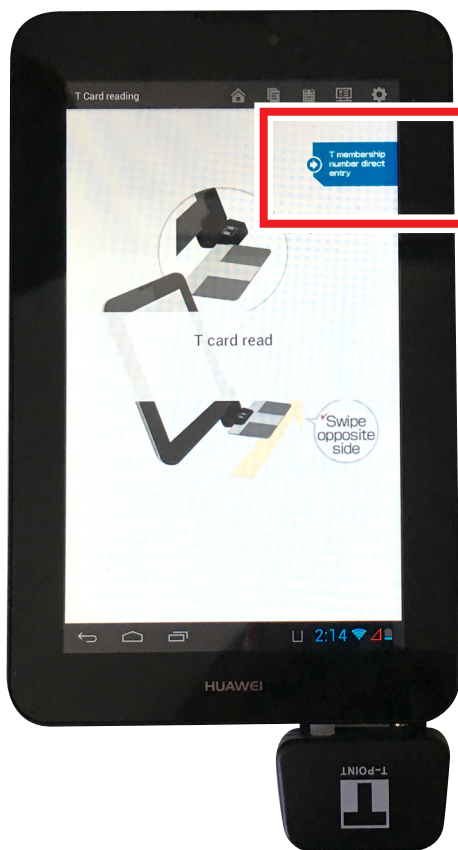


● Read front face (sample)

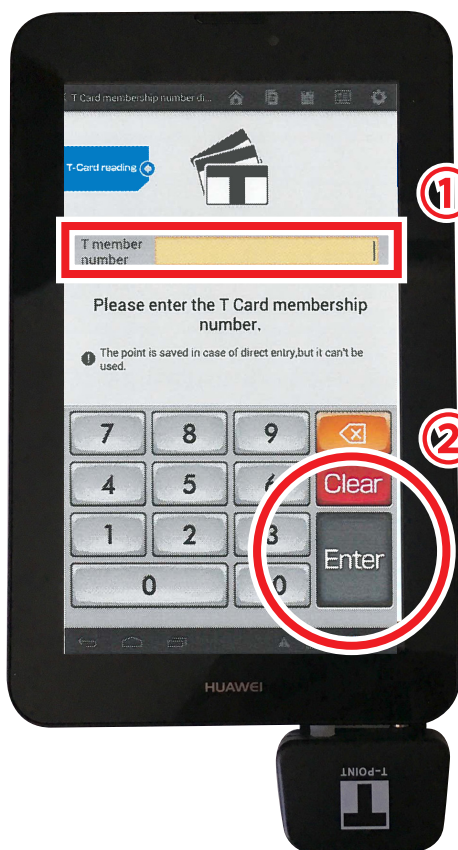
● Read back face (sample)

-  Mark of reading position
-  T-Card membership number
-  Credit card number

? If T-Card can not be read, directly enter membership number.



Touch [T membership number direct entry] icon on top right of screen.



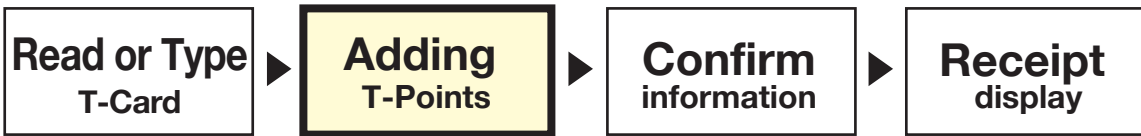
T Membership number direct enter screen will appear on display.

① Directly enter 9 digit number on T-Card or 16 digit T-Card membership number using numeric keypad.

② If number is correct, touch [Enter] key.

● T-Card membership number position (sample)





When T-Card reading is complete, screen on left will appear.

Enter amount of payment

Use numeric keypad to enter amount of payment and touch [Enter] key.

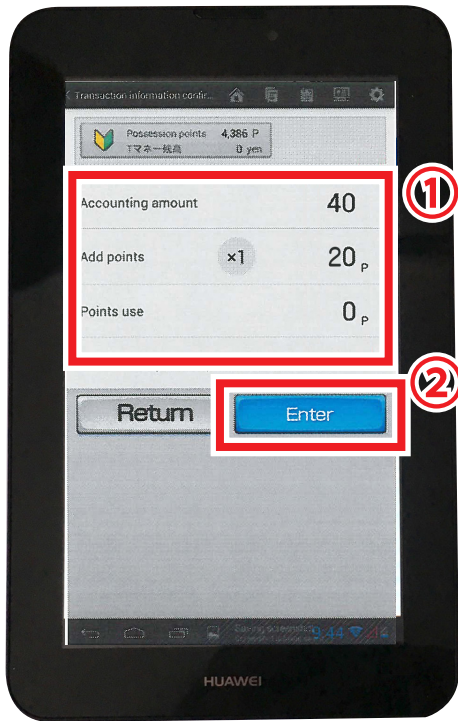
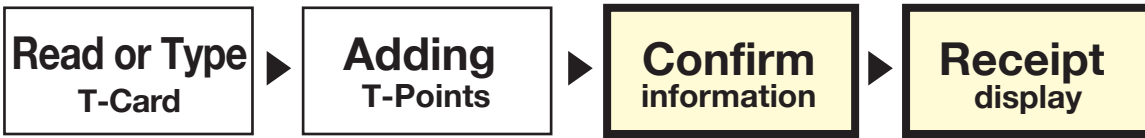
Note: This app only allows dollar amount, not allowed to input cents.
So, round off / up decimal places following your store rule.



After you enter the amount of payment, you will edit [Add point] section.

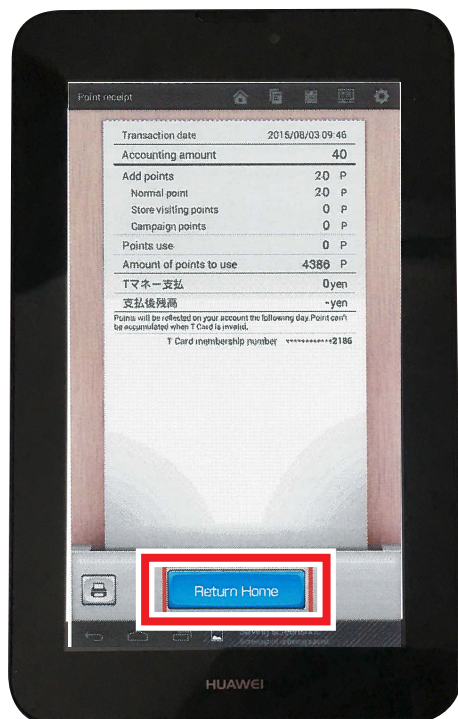
① Basic multiplying number is **x1** in [Adding point] section. Adding points will be calculated automatically.

② Information is correct, touch [Enter] key.



Confirm entered information

- ① Entered Information will appear on screen.
- ② If information is correct, touch [Enter] key.



Point receipt display

When transaction is complete, point receipt will show on screen.

When going back to T-Card reading screen, touch [Return Home] key.



When T-Card reading is complete, screen on left will appear.

Enter amount of payment

Use numeric keypad to enter amount of payment and touch [Enter] key.

Note: This app not allowed to input cents.
So, round off / up decimal places following your store rule.



After you enter the amount of payment, you will edit [Add point] [Point use] section.

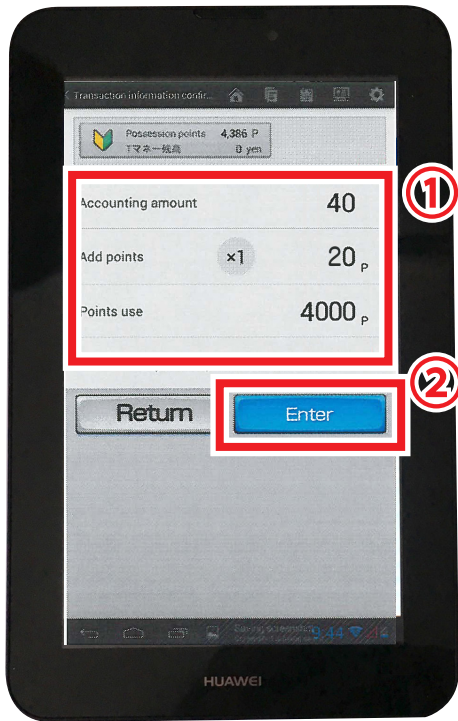
Entering amount of points to use

① Basic multiplying number is **x1** in [Adding point] section. Adding points will be calculated automatically.

② Use numeric keypad to enter amount of points used.

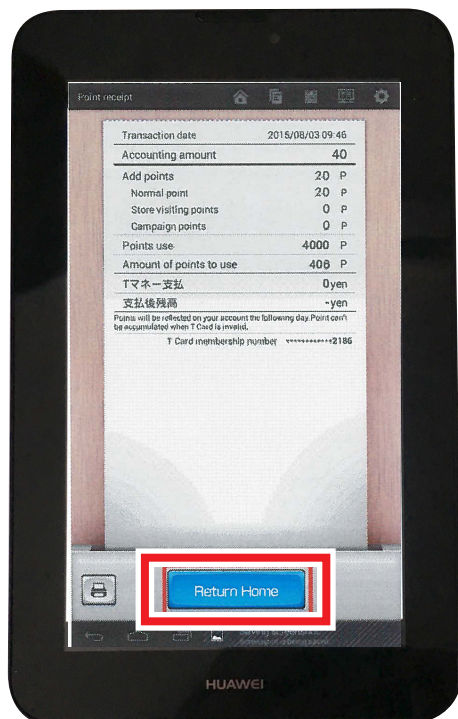
Note: 100point equal 1dollar when point use.

③ Information is correct, touch [Enter] key.



Confirm entered information

- ① Entered Information will appear on the screen.
- ② If information is correct, touch [Enter] key.




Point receipt display

When transaction is complete, point receipt will show on screen.

When going back to T-Card reading screen, touch [Return Home] key.

How to see payment detail

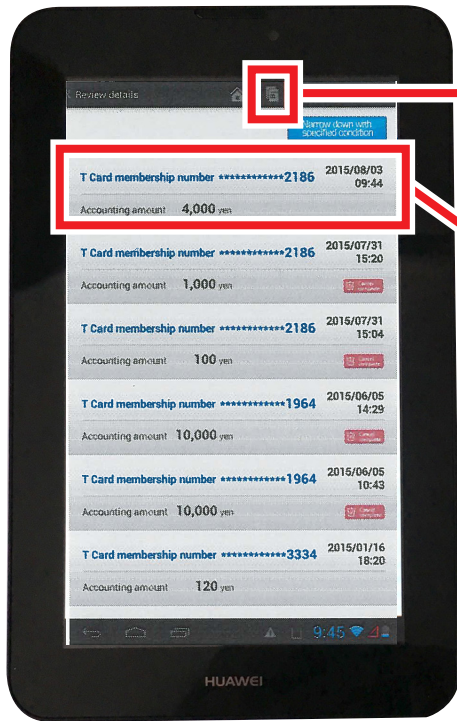
Touch  icon on top bar of screen.
Details will show in the order of recent use.

Select payment detail

Touch desired delete detail.

Note: Detail was already cancelled showing this

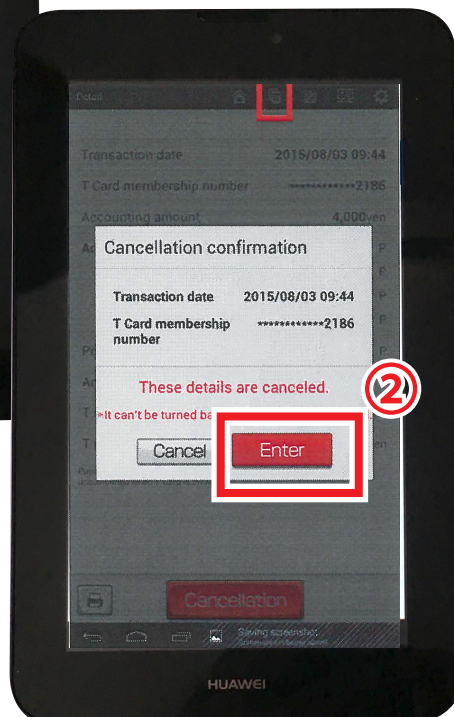
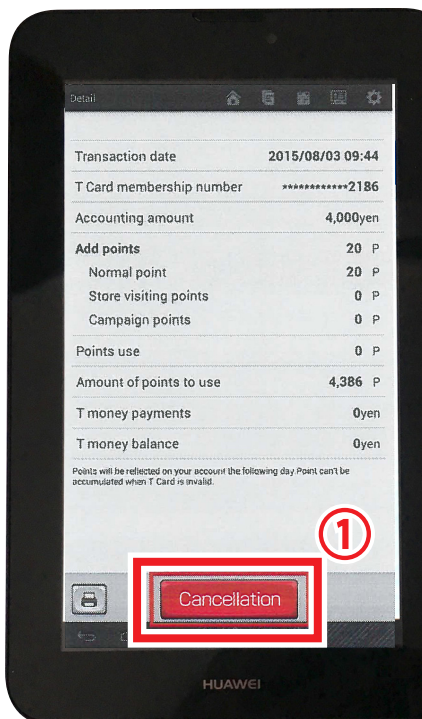
 Trush bin icon.



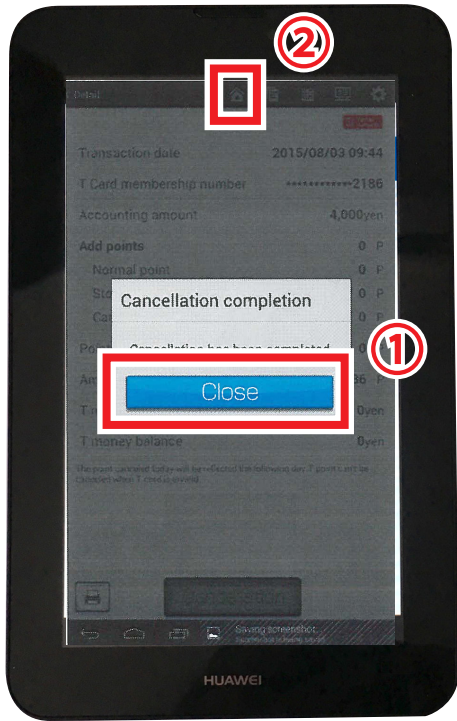
Cancellation

Details of payment will appear on screen.

① If the desired delete detail is correct, touch [Cancellation] key.



② Cancel confirmation will appear. If the information is correct, touch [Enter] key.



① After cancellation, touch [Close] key.

② When going back to T-Card reading screen, touch  icon on top bar of screen.

How to see daily trial balance sheet

Touch  icon on top bar of screen.

Daily trial balance sheet will show.

Note: Daily trial balance sheet does not included deleted transaction and unspent data.

Changes in tabulation period

① Touch [Changes in tabulation period] key, Dialog will pop up on screen.

② Edit the period, touch [Enter] key.

